



Photo by Larry Lehman

May 15th Club Meeting Earl Richardson on Family Portraits

This month we'll welcome Earl Richardson, a Kansas City area photographer located in Lawrence, Kansas. Earl's photographs and photography stories will be sure to warm your heart!

Earl has over 30 years of professional experience in a range of different photography genres with a particular focus on portraits, advertising, and sports imagery. His career began in photojournalism, where he honed his storytelling skills. Over the years, his work evolved to include advertising and commercial photography. Earl is known for his ability to create dynamic, arresting portraits and striking compositions that bring out the essence of his subjects.

At our meeting Earl will focus on family portraits and share his techniques for engaging his subjects. He'll also offer his many insights from his career in journalism and freelance work.

Be sure to check out Earl's [website](#) ahead of time and bring your questions! You'll find that in addition to the topics already mentioned he is an accomplished drone photographer, wet plate artist, and is skilled at balancing technical expertise with artistic vision.

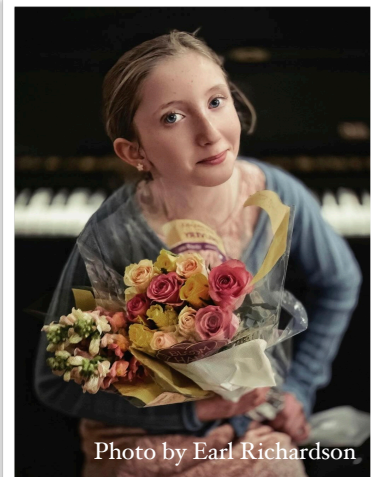


Photo by Earl Richardson

Also in This Issue

- ◆ Info on upcoming club Kansas Land Trust Outing and June club picnic (p. 2)
- ◆ Info on upcoming Merriam exhibition (p. 2)
- ◆ Carole's Corner on TIPS FOR MEMORABLE SPRING FLOWERS Pt. 2



Photo by Mark Asbury

Member Slide Show

Each meeting we have a slideshow of photos submitted by our members. The photos submitted for the slideshow will be available for viewing on the DD&B website and a few may be selected for this newsletter. We hope that most members will participate. Guidelines [here](#).

Save the Date! DD&B Club Picnic on Saturday, June 21st

In lieu of our monthly club meeting we'll have the annual June club picnic at Shawnee Mission Park. The festivities begin at 4:00 PM; club photo at 4:30 PM and dinner at 5:00 PM. We'll have some fun photography-related activities and a slide show after dinner. Watch for more details in the next few weeks.

"A Colorful Combine" Exhibition June 5th-29th

If you have the opportunity, do check out the upcoming [exhibition](#) in the Tim Murphy Art Gallery located in the Merriam Community Center. It will feature three local artists including photographs by DD&B club member Susan Pfannmuller.

Club Photo Outing on May 17th: Kansas Land Trust with Bruce Hogle

Bruce Hogle, a DD&B club member frequently acts as a liaison to set up outings for our photo group on various properties of the Kansas Land Trust. Bruce has facilitated an outing for this Saturday, May 17th on a KLT easement of 15 acres of native prairie, plus 15 acres of woodland near Lawrence, Kansas. We'll find many new and different varieties of wildflowers (bring a macro lens if you have one) as well as many varieties of birds if you're a birder. There is a stone fence along the west side of the prairie and three walking paths in the woods. A beaver makes his home on a creek along one of those walking paths.

The event will have an 8:30 am start. Queren, the KLT coordinator as well as the property owner, Brad Guess, will be present to share facts and stories about this land.

If attending be sure to bring bug spray; wear long pants and long-sleeved shirts and appropriate shoes as there is some poison ivy, thorny plants, and possibly chiggers and/or ticks in the area.



Photo by Bruce Hogle

The address is 523 North 1700 Road in Lawrence. (GPS Coordinates: 38.985782, -95.405823) This is the home address of the

property; we should park alongside the stone fence in front of the house; be sure to get all the way off the gravel road or you'll be at risk of getting a ticket.

CAROLE'S CORNER

TIPS FOR MEMORABLE SPRING FLOWERS, PART 2

Don't procrastinate! The short blooming season lasts only a few weeks. There are interesting photos to be taken from the moment a flower pops through the soil until they wilt.

LIGHTING DIRECTION

Side lighting and top lighting give your flower a different look as the day progresses. The shadows of every nook and cranny will be emphasized differently. Side-lighting is known for emphasizing texture. It can also project a full shadow of the flower onto the background. Top lighting is associated often with noon time and is the most common lighting for a flower snapshot.

EVEN LIGHTING



Instead of direct sunlight, try using the more even lighting created by putting your body's shadow over the flower

subject. Take time to compare what the flower looks like with and without your shadowed lighting.

TIME OF DAY

Outdoor flowers look different at dawn than during the day. Their shape may be different at dawn and dusk than during the day. Their

surface may look different, such as with dew in early morning. They may be in the shadow cast by other plants or inanimate objects, such as a building or a fence. The shadows can be positioned in different locations. The background can look darker or lighter.

LIGHTING COLOR

I don't really notice that the basic color of a tulip looks different by itself in the morning or at noon. But I do notice a difference when some of the background is visible and I also notice the warm lighting of dawn and dusk. The morning image can have its own look when compared to the same shot taken at noon or evening.

Also, the flower seems different when shot before a rainstorm, after a thunderstorm, or in the golden hour (which only lasts 5 minutes for me!). This overall colorcast of the outdoor light contributes to the mood. Often the clouds are spectacular, too.

MOOD

Capture a mood with your choices of subject matter, background, time of day, lighting, and composition. A wilted flower exudes loneliness.

Two flowers bending towards each other look friendly. A bed of bright red tulips makes me feel happy.